



**Shaw
& Co**
ESTATE
AGENTS

£650,000
Ellerdine Road
Hounslow, TW3 2PX

**Shaw
& Co**

PROPERTY SUMMARY

Shaw & Co are delighted to present this spacious semi-detached house, offering more room than the average home in the area. The property features four bedrooms, a large private garden and downstairs wc.

Inside, the home includes a hallway that leads to a large front reception room and dining room, and a generous kitchen with direct access to the private garden. The ground floor also benefits from a downstairs w/c. The first floor comprises four well-sized bedrooms, a family bathroom, and a separate w/c.

Additional highlights of this property include a sizeable south west-facing garden, off-road parking for two to three cars, and potential for further expansion, subject to planning permission (STPP).

Located on Ellerdine Road, a quiet residential street off Central Avenue and Heath Road, the property is conveniently positioned near the amenities of Isleworth, Whitton, and Hounslow. It is also close to Hounslow mainline station and Twickenham Rugby Stadium.

4



1



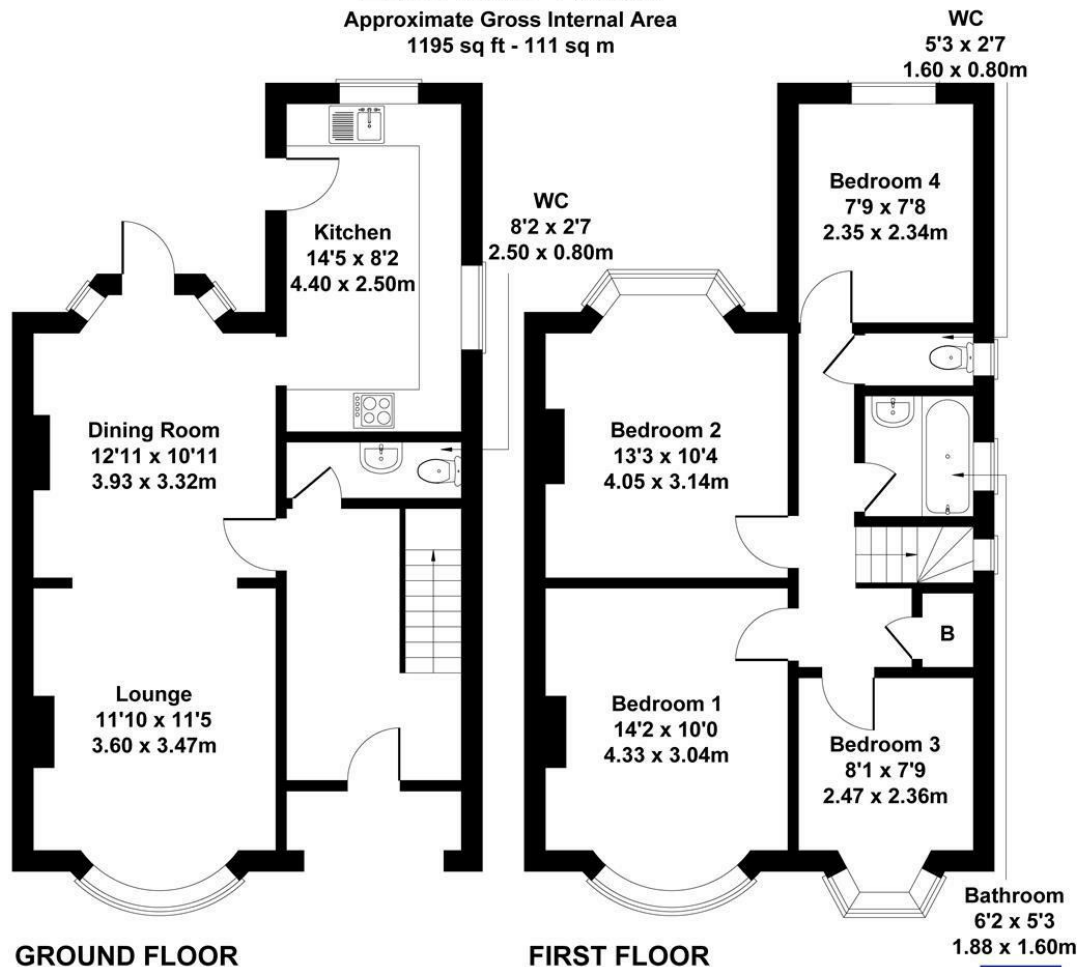
2





Ellerdine Road

Approximate Gross Internal Area
1195 sq ft - 111 sq m



Not to Scale. Produced by The Plan Portal 2025
For Illustrative Purposes Only.

Shaw
& Co

LOCAL AUTHORITY

Hounslow

TENURE

Freehold

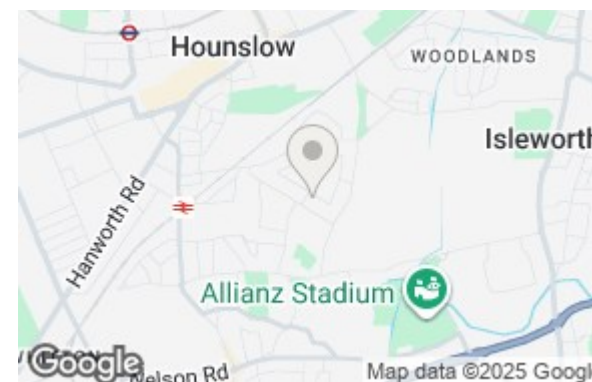
COUNCIL TAX BAND

E

VIEWINGS

By prior appointment only

Energy Efficiency Rating		
	Current	Potential
Very energy efficient - lower running costs		
(92 plus) A		
(81-91) B		
(69-80) C		
(55-68) D		
(39-54) E		
(21-38) F		
(1-20) G		
Not energy efficient - higher running costs		
England & Wales	EU Directive 2002/91/EC	



Agents Note: Whilst every care has been taken to prepare these particulars, they are for guidance purposes only. All measurements are approximate and are for general guidance purposes only and whilst every care has been taken to ensure their accuracy, they should not be relied upon and potential buyers/tenants are advised to recheck the measurements

**Shaw
& Co**
ESTATE
AGENTS

OFFICE ADDRESS
Whitton
Twickenham
TW2 7LT

OFFICE DETAILS
0208 894 3646
whitton@shawandcoestates.com